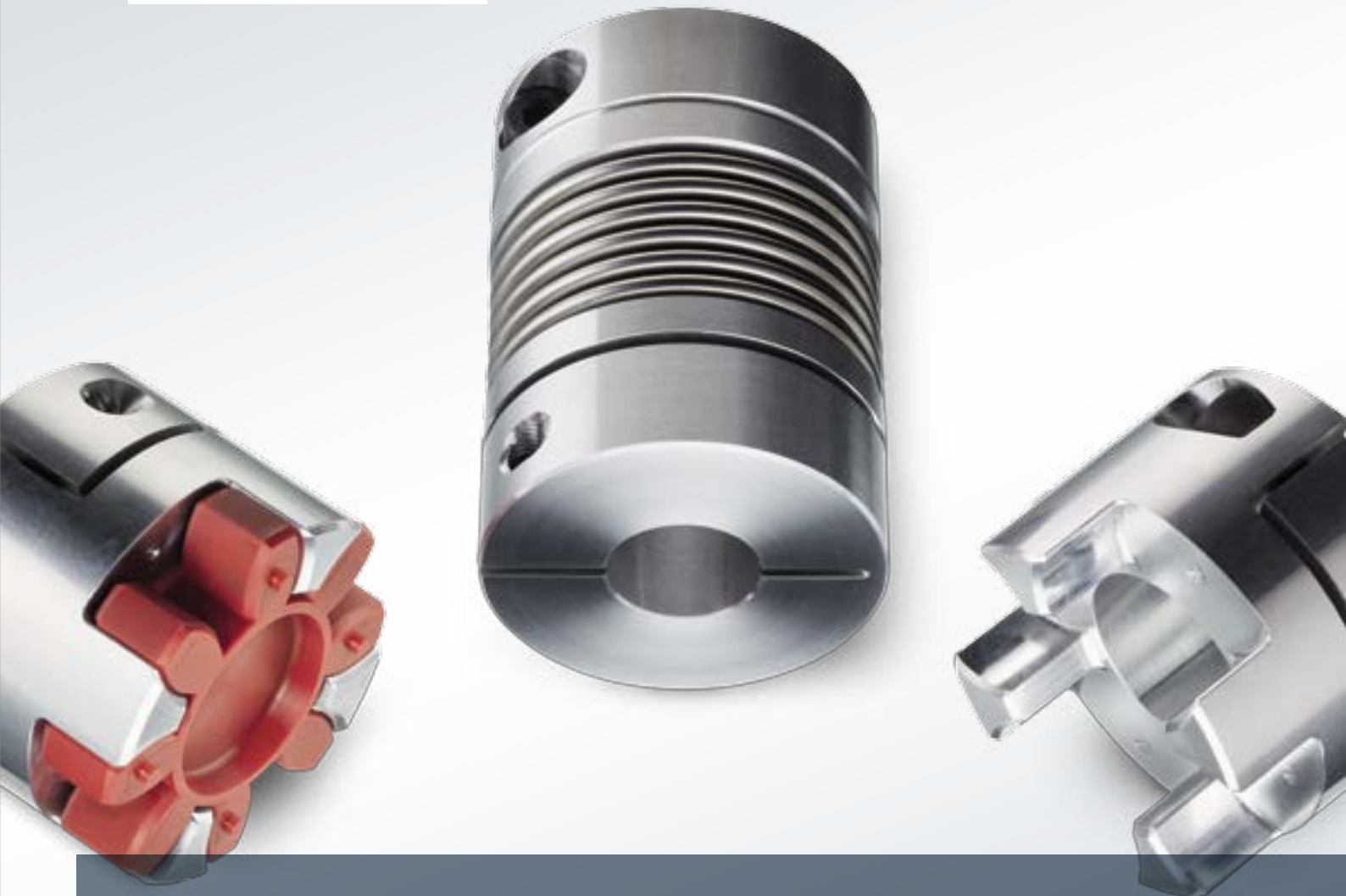


SIEMENS



Backlash-free applications – easily solved

New in the product range: BIPEX-S and SIPEX
for servo- and positioning drives

Backlash-free couplings

[siemens.com/couplings](https://www.siemens.com/couplings)

BIPEX-S and SIPEX backlash-free couplings



Siemens has been a leading supplier of automation systems, controllers, inverters and servo- and geared motors for downstream industries for decades. That is why we are very familiar with the demands that high-precision applications place on couplings with regard to efficiency, quality and precision. And as a leading supplier of industrial coupling solutions, we pay special attention to product quality in order to guarantee our customers process reliability.

By purposefully combining our expertise, we have now developed a range of new products that supplement our existing portfolio.

SIPEX couplings are made of high-quality stainless steel and aluminium or steel. Their stainless steel bellows compensate for axial, radial and angular misalignment with only low reaction forces.

Whether positioning drives, stepping motors or linear units, machine tools, packaging or textile machines, filling plants, production lines or material handling machines, robots, presses or wood-processing plants – backlash-free couplings play an important role in all applications. They are the critical link between the motor and the driven machine. As a modular interface, they not only ensure reliable and backlash-free transmission of forces but also compensate for the inevitable misalignments that occur between the coupled units.

SIPEX	
Torque range	0.5 to 5,000 Nm (in 19 sizes)
Outside diameter	10 to 207 mm
Metal bellows	made of stainless steel
Hubs	made of aluminium or steel
Temperature range	-30 °C to 250 °C

SIPEX hub versions



with set screw



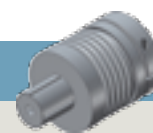
with external or internal taper



with clamping hubs

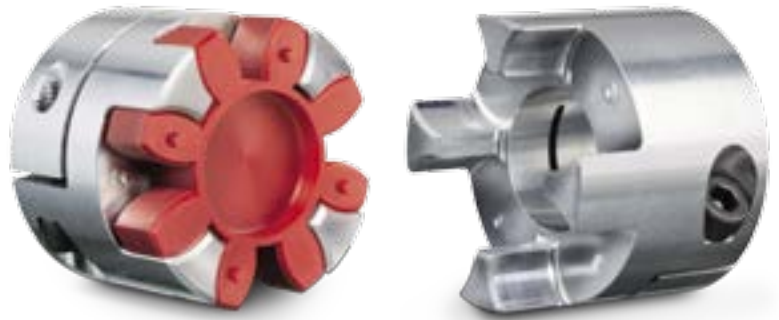


with half shells



with expanding mandrel

BIPEX-S couplings are made up of two aluminium hubs and a polyurethane cam ring. Different cam ring hardness ratings allow the damping ratio and the torsional stiffness of the coupling to be varied.



BIPEX-S	
Torque range	1 to 655 Nm (in 10 sizes)
Outside diameter	10 to 105 mm
Elastomer	PU cam ring with 98 Shore A, 92 Shore A, 80 Shore A or 64 Shore D
Hubs	made of aluminium or steel
Temperature range	-50 °C to 120 °C (for short periods: -60 °C to 150 °C)

We offer you a large range of types and sizes in two model ranges for problem-free installation: vibration-damping and electrically insulating plug-in BIPEX-S® elastomer couplings and SIPEX® metal bellow couplings with high torsional stiffness for torque transmission that conforms particularly well to the respective angle.

Both coupling series are almost completely maintenance- and wear-free and have an exceedingly low moment of inertia. They are very compact, suitable for a range of installation requirements due to availability of different hub versions and are very easy to install. The use of high-

quality materials combined with optimum workmanship maximises the availability of your plant.

BIPEX-S and SIPEX are designed for applications in which Siemens has been at home for decades and fit seamlessly into our Integrated Drive Systems concept.

BIPEX-S hub versions



with set screw



with external taper



with clamping hubs



with expanding mandrel



with half shells

There's more to it

www.siemens.com/ids

Discover in detail how Integrated Drive Systems boost your competitive edge and improve your time to profit.

Integrated Drive Systems to go: Visit our mobile site!



Follow us on:

www.twitter.com/siemensindustry

www.youtube.com/siemens

Siemens AG
Process Industries and Drives
Mechanical Drives
Schlavenhorst 100
46395 Bocholt
GERMANY

Subject to change without prior notice 04/15
Article No.: PDMD-B10010-00-7600
DISPO 27904
ROMEN 2611101997 04/15 2.0
Printed in Germany
© Siemens AG 2015

The information provided in this brochure contains merely general descriptions or characteristics of performance which in case of actual use do not always apply as described or which may change as a result of further development of the products. An obligation to provide the respective characteristics shall only exist if expressly agreed in the terms of contract.

All product designations may be trademarks or product names of Siemens AG or supplier companies whose use by third parties for their own purposes could violate the rights of the owners.